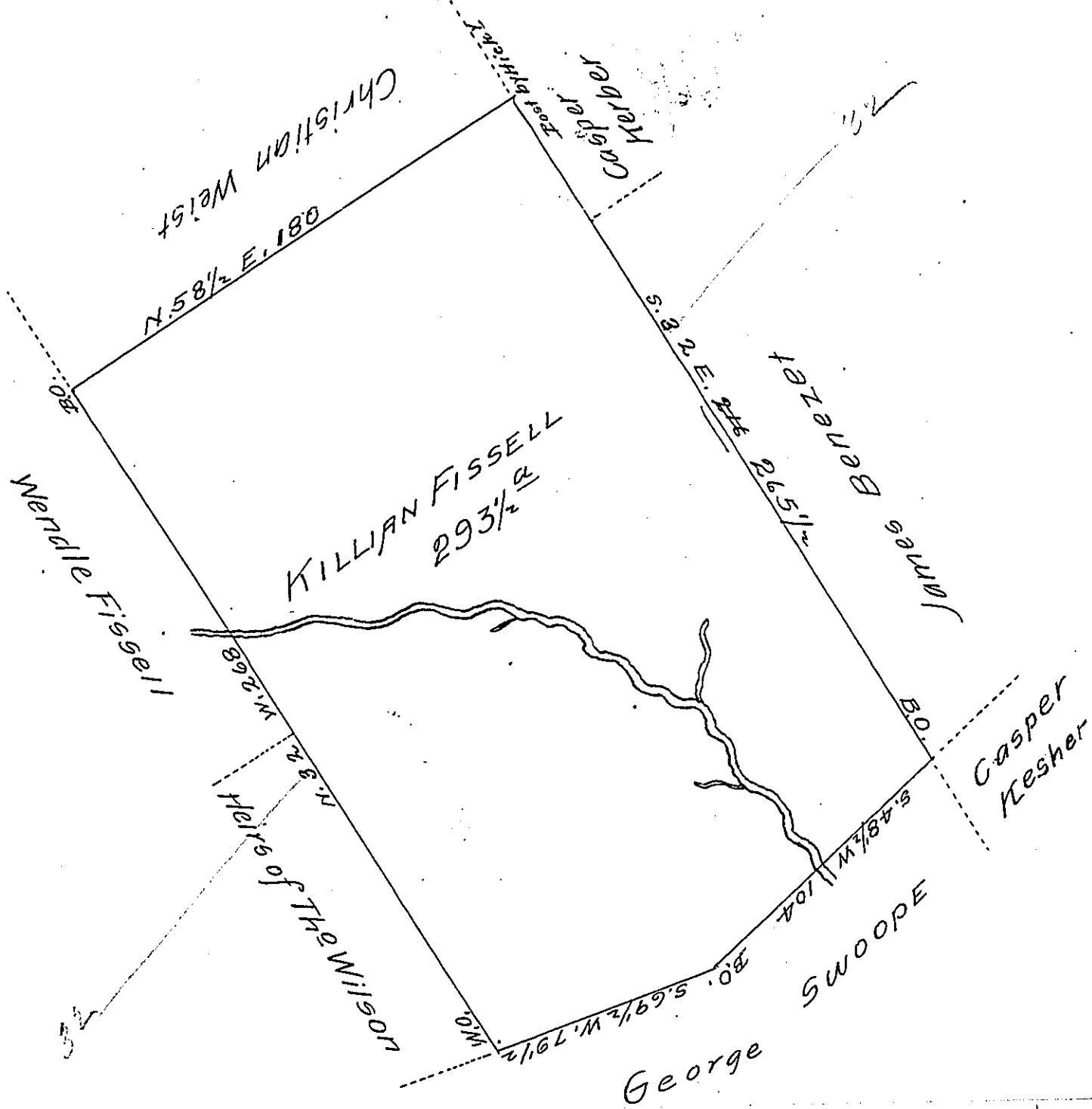


FORM NO. 1.



A Draught of a Tract of Land called _____ Situate in
 Paradise Township in the County of York. Surveyed (accor-
 ding to its ancient lines) the 4th day of May 1774 for
 Killian Fissell. In pursuance of a Warrant dated the 29th
 day of March 1753. Containing Two hundred and Ninety
 three acres & 80 perches and allowance of six acres p
 cent for roads & ca.

Chas^s Lukens D.S.

To John Lukens Esq^t
 Surveyor General

IN TESTIMONY that the above is a copy of the original remaining on file in
 the Department of Internal Affairs of Pennsylvania, made
 conformably to an Act of Assembly approved the 16th day of
 February 1833, I have hereunto set my hand and caused
 the Seal of said Department to be affixed at Harrisburg,
 this fourth day of June 1907

Henry Horner
 Secretary of Internal Affairs.